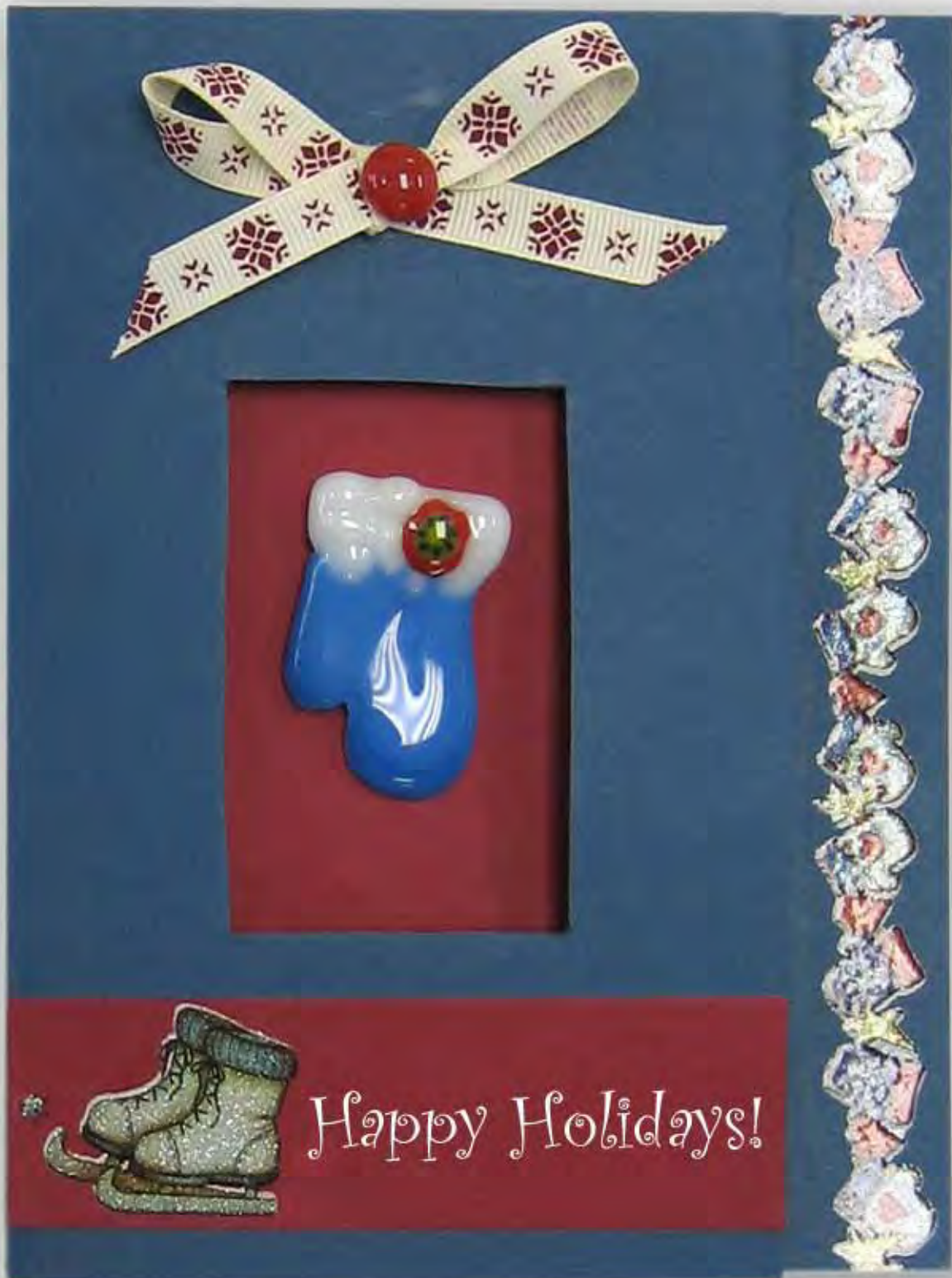


# CUTE AND CUDDLY MITTEN PIN

A glass fusing project



**PROJECT TITLE:**

Cute and Cuddly Mitten Pin

---

**DESIGNED BY:**

Jeanne Baruth

---

**SKILL LEVEL:** (Adult 1-5: 1 being the easiest, 5 being most difficult)

3

---

**TIME TO COMPLETE:**

3 HR

---

**ROMANCE COPY:**

Everyone will warm up to this cute and cuddly mitten pin. Tuck it into a card for a nice holiday surprise or place it in a cute gift box for holiday gift giving.

---

**PROJECT TIP:****VENDOR NAME:**

Diamond Tech

---

**INSTRUCTIONS:***Step 1*

Measure and mark the following glass sheets:

- Opalescent Blue – one 1 ½" x 1 ½" square
- Opalescent White – one 1 ½" x 3/8" rectangle

*Step 2*

Using a glass cutter, cut glass to designated sizes as indicated above. Clean glass using paper towel moistened with water. Completely dry the surface of the glass with a lint free cloth.

*Step 3*

Next, cut a 2" X 2" piece of kiln paper. Remove the lid from the Fuseworks™ Kiln. Place the kiln paper on the kiln base.

*Step 4*

Using scissors cut-out mitten pattern. Using a glue stick, adhere mitten pattern to the 1 ½" blue glass square. Trace around the mitten with a Sharpie™ marker and remove pattern. Following the cutting (Diagram 1) add additional score lines that radiate from the edges of the mitten. Using a glass cutter, make the score marked 1. Break out the score lines with running pliers. Continue to score and cut according to Diagram 1. Should your piece have rough edges to them, simply file them off using a metal fingernail file or something similar.

*Step 5*

Place the two pieces of blue glass together to form a mitten (see pattern) and place it in the center of the kiln paper. Position the white rectangle against the flat side of the bottom of the

blue glass, but not overlapping. Place a milliefiori on the white rectangle and sprinkle white frit along the seam where the blue and white glass meets.

#### *Step 6*

Carefully set the base with glass inside the microwave. Cover base and glass with kiln lid.

#### *Step 7*

Fuse at 100% power in a 1200 watt household microwave for 1 minute: 35 seconds. When using a lower wattage microwave, increase time to 2 minutes: 30 seconds.

PLEASE NOTE: All microwave and kiln combinations will have different firing patterns. Be sure to take careful notes and log all fusing times for future use.

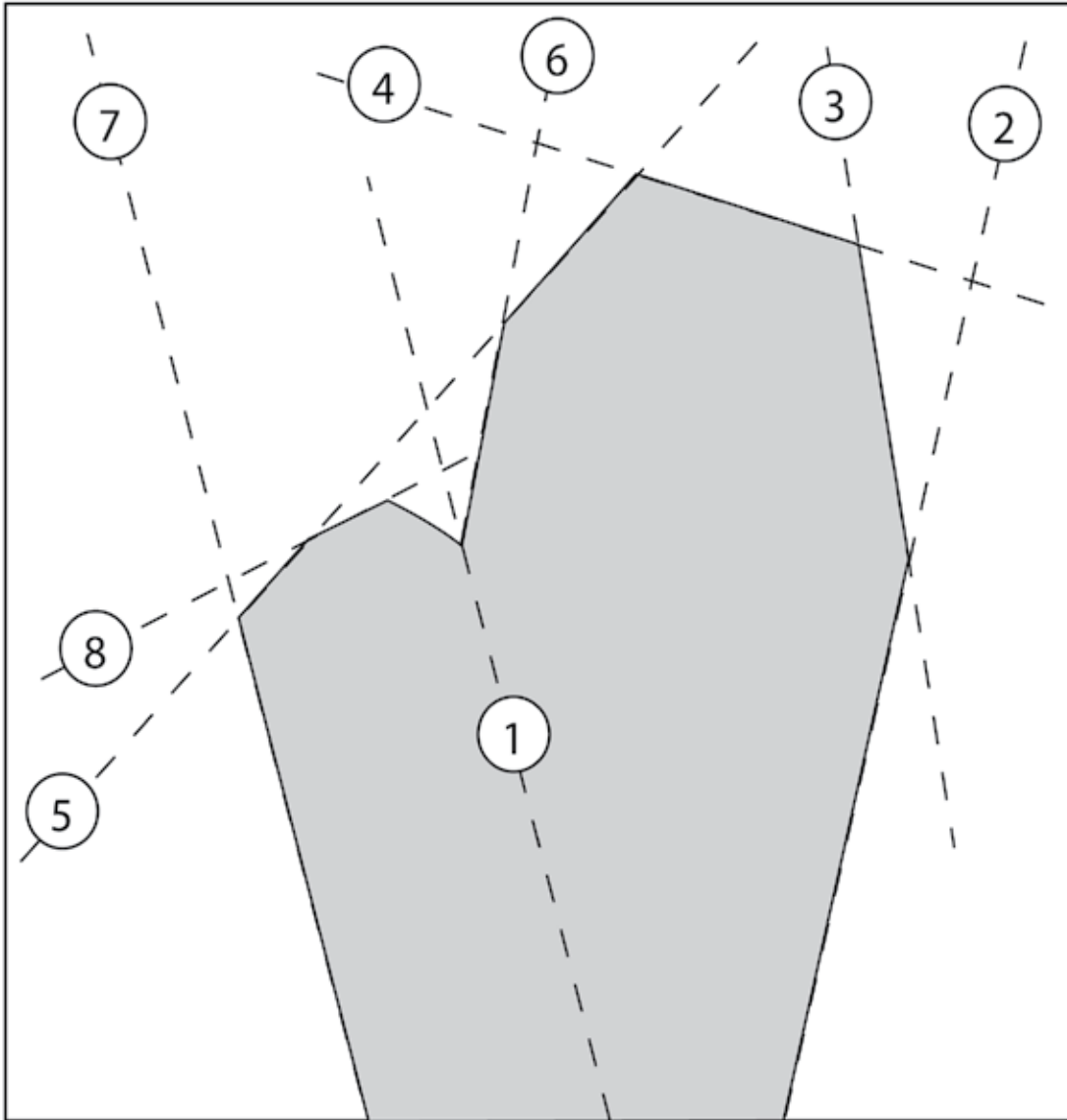
After time is up, open microwave and, using Hot Mitts, carefully lift the lid enough to inspect the fusing process. Add additional time in 30 second increments until desired results are achieved. Remove kiln from microwave using the Hot Mitts and place on a heat resistant surface. Cool the kiln on a heat resistant surface for at least 40 minutes with the lid on. **WARNING:** Removing the lid or peeking under the lid during the cooling will result in your piece cracking. Glass remains hot for a long time and should be handled with great caution.

#### *Step 8*

When cool, adhere a pin back to the back side of the fused glass mitten using a glass adhesive such as E6000®. Allow to dry according to glue manufacturer's direction. When dry, make a slit in your favorite hand-made or purchased card and slide the pin baking into the opening.

-----  
**MATERIALS CHECKLIST:**

- Fuseworks Microwave Kiln
- Fuseworks Kiln Paper
- 1 pc/ea Fuseworks™: Opalescent Blue and White Sheet Glass
- Fuseworks Milliefiori Assortment
- Fuseworks White Frit
- Fuseworks™ Glass Cutter
- Fuseworks™ Running Pliers
- Pin backs
- E6000® or other glass glue
- Holiday card or gift box optional



Pattern for the Cuddly Mitten  
Blue Glass measures 1.5" x 1.5"

cut lines      - - - - -

cut number    (1)