

pitiful posy

Designed by Kim Grasso

Online Project • February 2011 • www.createanddecorate.com



Materials

Grunge/Stain

• Ground cinnamon/cloves/or nutmeg (optional), instant coffee, Mason jar, measuring cup, molasses (optional), tablespoon, vanilla extract (optional), spray bottle, water

Doll

• Acrylic paint (orange or red), birdseed, buttons (two), crochet thread (black), jute or hemp (approx. 6" piece), needle nose pliers, osnaburg, paintbrush, pearl cotton or embroidery thread, pencil, polyester fiberfill and birdseed (or sawdust or rags), ruler, rusty wire, scissors, sewing machine and thread, sewing needle, small stick (approx. 1-1/2"), ticking fabric (for dress), wire cutters, wool felt (a scrap)

Vintage Quilt Pins/Ornies

• Cutter quilt, fabric stiffener, glass glitter, ground cinnamon, hot glue gun and glue, lace, needle nose pliers, pin backs (1"), rusty pins, rusty wire, scissors, sewing needle and thread, vanilla extract, vintage button, wire cutters

Yo-Yo Heart

• Clover Quick Yo-Yo Maker (large heart shape), green homespun (small strip), hot glue gun and glue, fabric scrap of choice, stick (approx. 8" long), vintage button

**Completed tags and kits available through Kim's Whims.*

pitiful posy

Designed by Kim Grasso

Instructions

For pattern, see below.

Note: Please read all instructions before beginning project.

Grunge/Stain

1. In Mason jar, add five tablespoons instant coffee for every one cup of boiling water. If desired, add ¼ cup vanilla extract, ¼ cup molasses, and one tablespoon ground cinnamon, cloves, or nutmeg. Shake to combine, then set aside. **Note:** If you are going to use the spray bottle to apply stain, omit the ground spices, as they will clog the nozzle.

Doll

1. Stain osnaburg by soaking in grunge mixture. Lay in the sun to dry (wrinkles are fine). If you like prefer a darker stain, use spray bottle and mist with grunge mixture, let dry completely, then repeat as needed. When completely dry, trace pattern pieces onto osnaburg (these are your sewing lines).

2. Stitch around arms and legs, leaving ends open for turning and stuffing as shown on pattern pieces; trim 1/8" from stitching. Stitch around entire body, then cut out 1/8" from stitching. Cut a small slit in the back for turning and stuffing, taking care not to cut through both layers of fabric. Clip corners and turn all pieces right-side out. Stuff the arms and legs with fiberfill to the fill line. **Note:** You may stuff doll with sawdust or rags for a more authentic primitive doll. If you use fiberfill, add weight to the body with birdseed if you would like her to sit, but this is not needed if doll will be a door hanger. Stuff body firmly and slipstitch back opening to close.

3. Sew button eyes in place as shown on pattern. Hand stitch felt nose and attach stick for mouth with pearl cotton or embroidery thread. Paint jute or hemp piece red or orange and allow to dry. Wrap around pencil to create curls, then hand stitch to head for hair: begin at the left and stitch each loop as you go, ending on the right. Tie a knot at each end to secure.

4. To make dress, cut pattern pieces and sew front to back with right sides facing in. Sew along top of sleeves to neck opening. Sew each side, beginning with the sleeve; sew to the bottom of the dress. Turn right-side out. Use black crochet thread to make a running stitch along neck opening. Put the dress on Pitiful Posy, gather, tie a knot, and trim ends.

5. If making a hanger, cut a piece of rusty wire to about 2-1/2". Curl ends slightly, then sew to back of head using crochet thread.

Vintage Quilt Pins

1. Trace hearts and cut out. If desired, sew on a vintage button or rusty pin, or adhere a bit of lace for decoration.

2. If making an ornie, cut a piece of rusty wire to desired length. Poke through heart, then twist ends together, forming hanger. If making a pin, you will attach pin back in step 4.

3. Following manufacturer's instructions, spray hearts with fabric stiffener. **Note:** I add a teaspoon of vanilla to the fabric stiffener to add a slight aging, but you don't want to use too much as it may take away from the beauty of the quilt you are using. While fabric stiffener is still wet, sprinkle on a little glass glitter, or rub on a little cinnamon to add to the prim look. Lay in the sun to dry (they should be very hard when completely dry).

4. Using hot glue, adhere pin back.

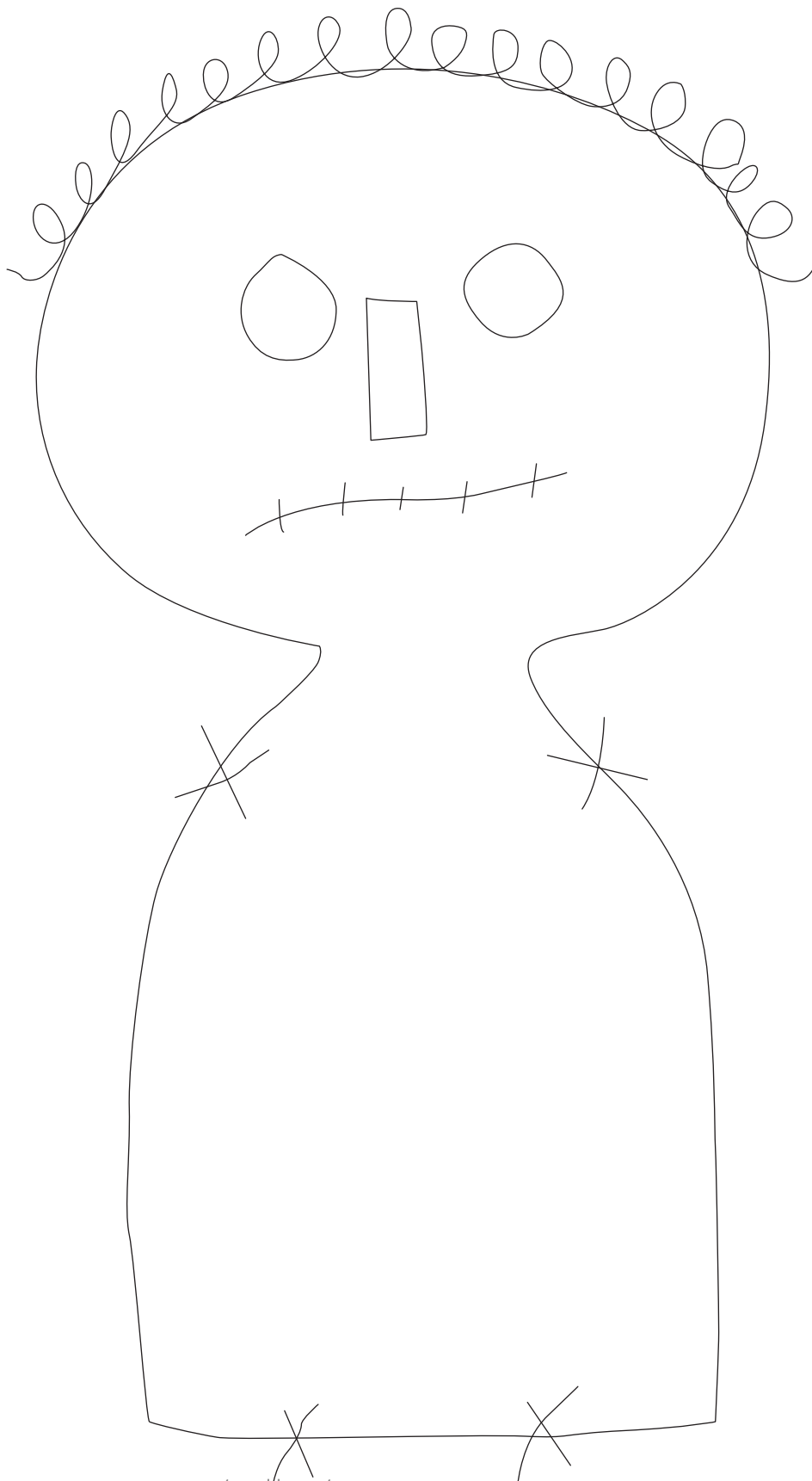
Yo-Yo Heart

1. Following manufacturer's instructions, use Yo-Yo Maker and scrap of fabric to create heart yo-yo.

2. Spray completed yo-yo with grunge mixture and allow to dry. Attach vintage button with needle and thread, then use hot glue to adhere to stick. Tie on green homespun strip. ♥

For questions regarding this design, please contact Kim at kims_whims@hotmail.com.

1 of 3



Attach arms and legs at 'X's

Leave open

Pitiful Posy

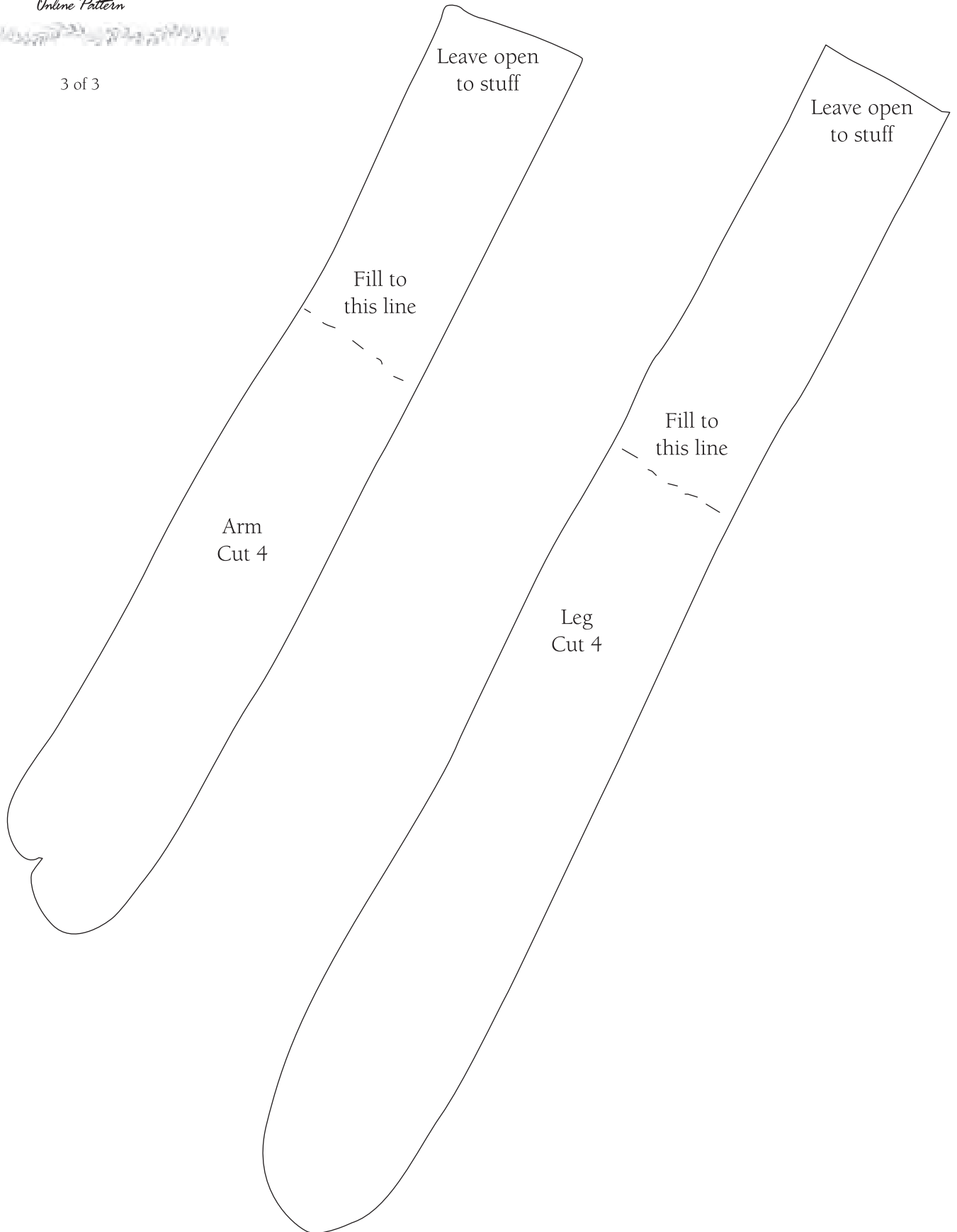
Place on fold

Dress
Cut 2

Create
& Decorate®
Online Pattern

Pitiful Posy

3 of 3



Vintage Quilt Pins

