

### How to Make a 3" x 3" x 3" Box

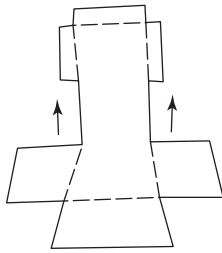


Diagram 1

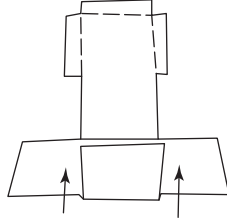


Diagram 2

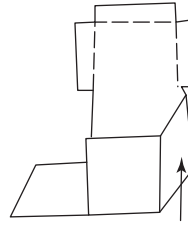


Diagram 3

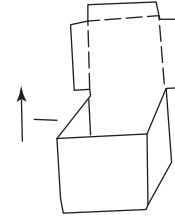


Diagram 4

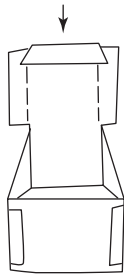


Diagram 5

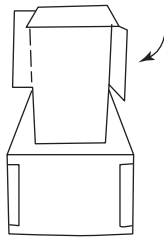


Diagram 6

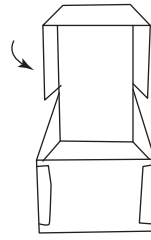


Diagram 7

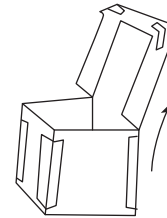


Diagram 8

### How to Prepare Paper Mache Box

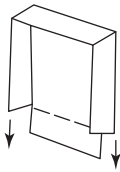


Diagram 1

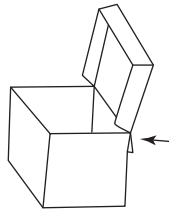


Diagram 2

Paper pattern

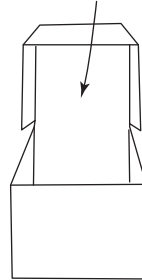


Diagram 3

Cardboard backing

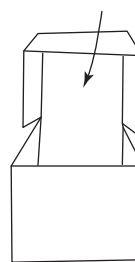


Diagram 4

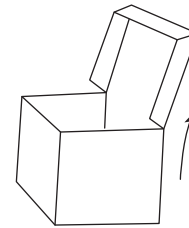
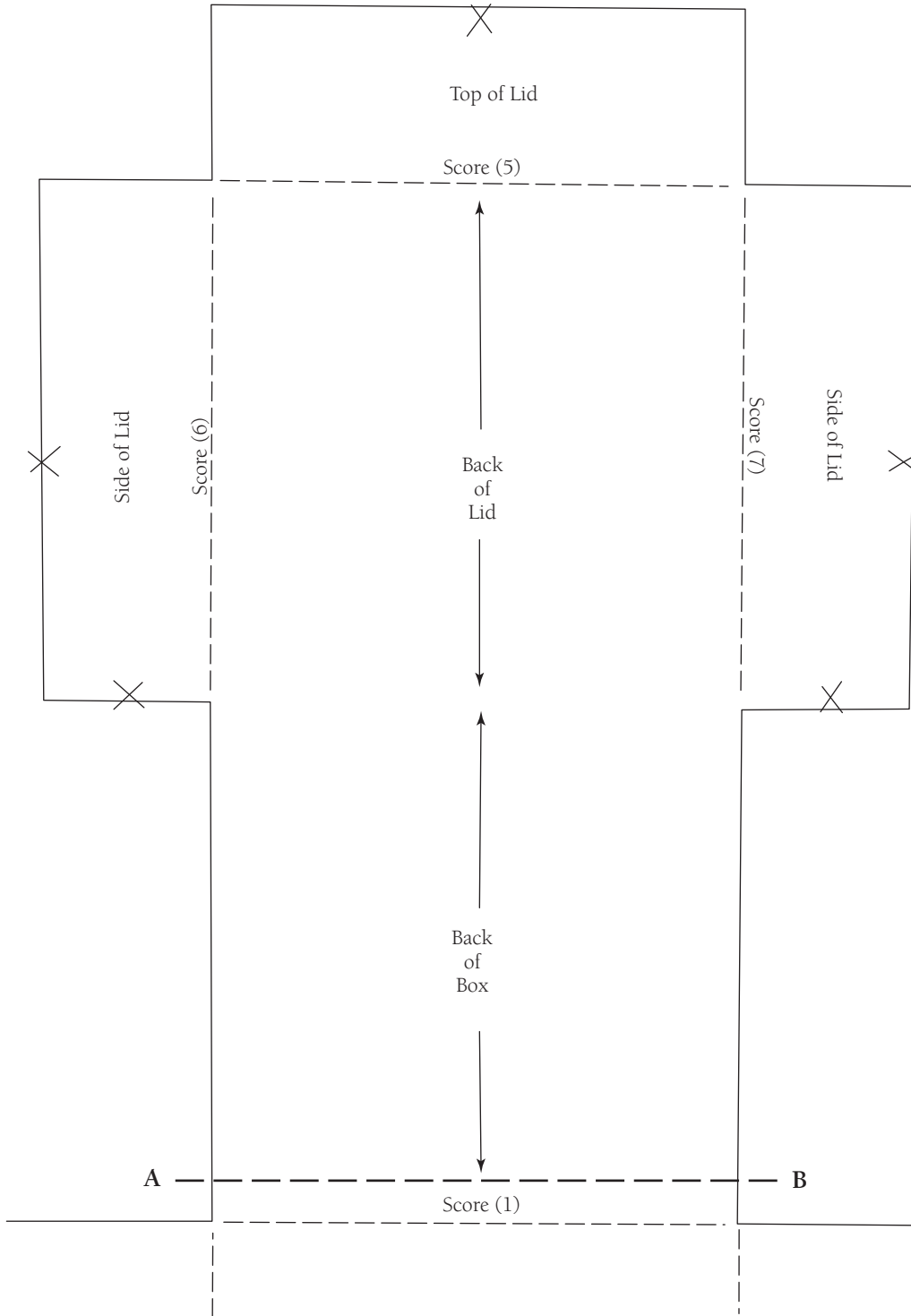


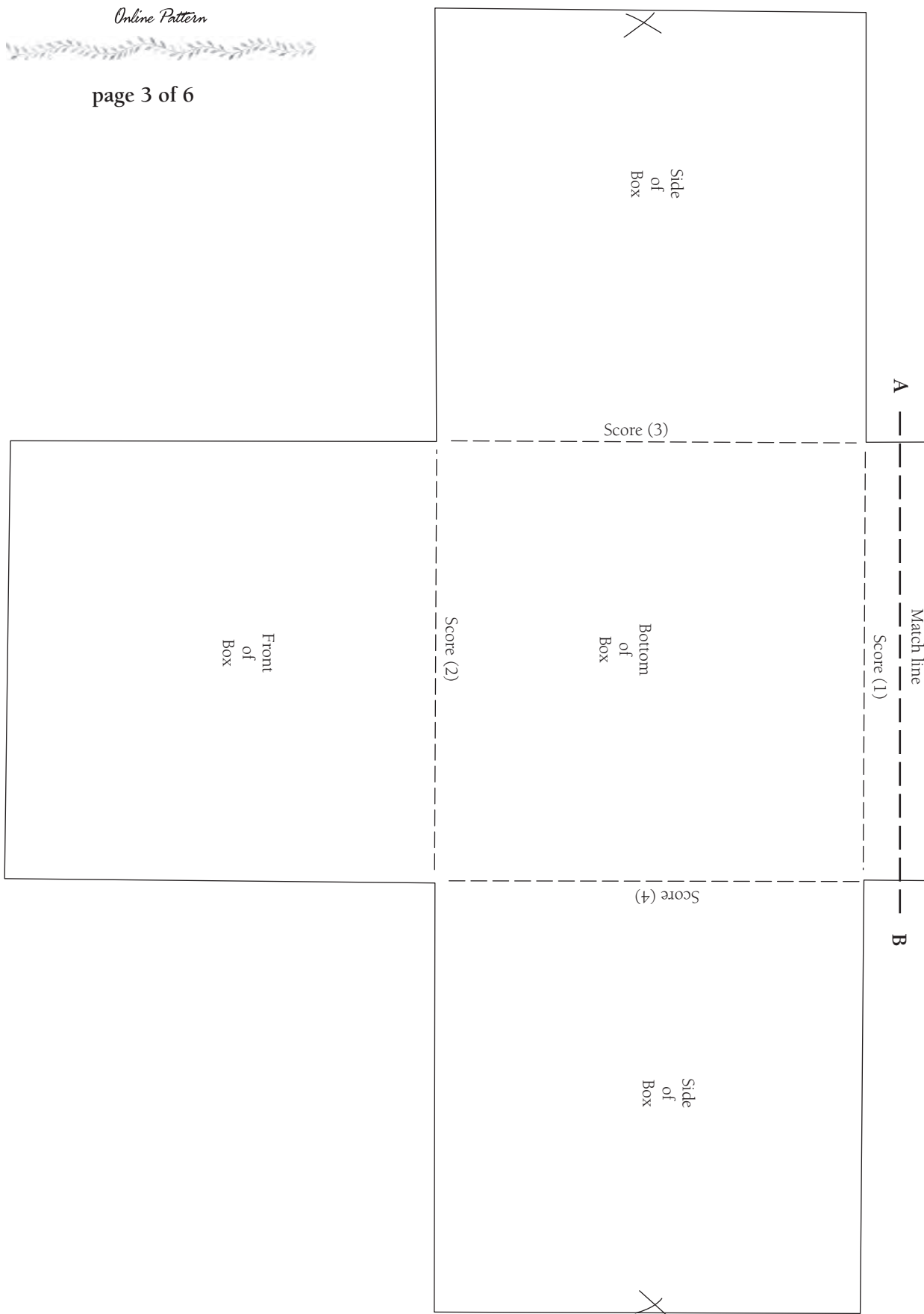
Diagram 5

Pattern to Make Box  
out of illustration board



## Pattern to Make Box out of illustration board

page 3 of 6



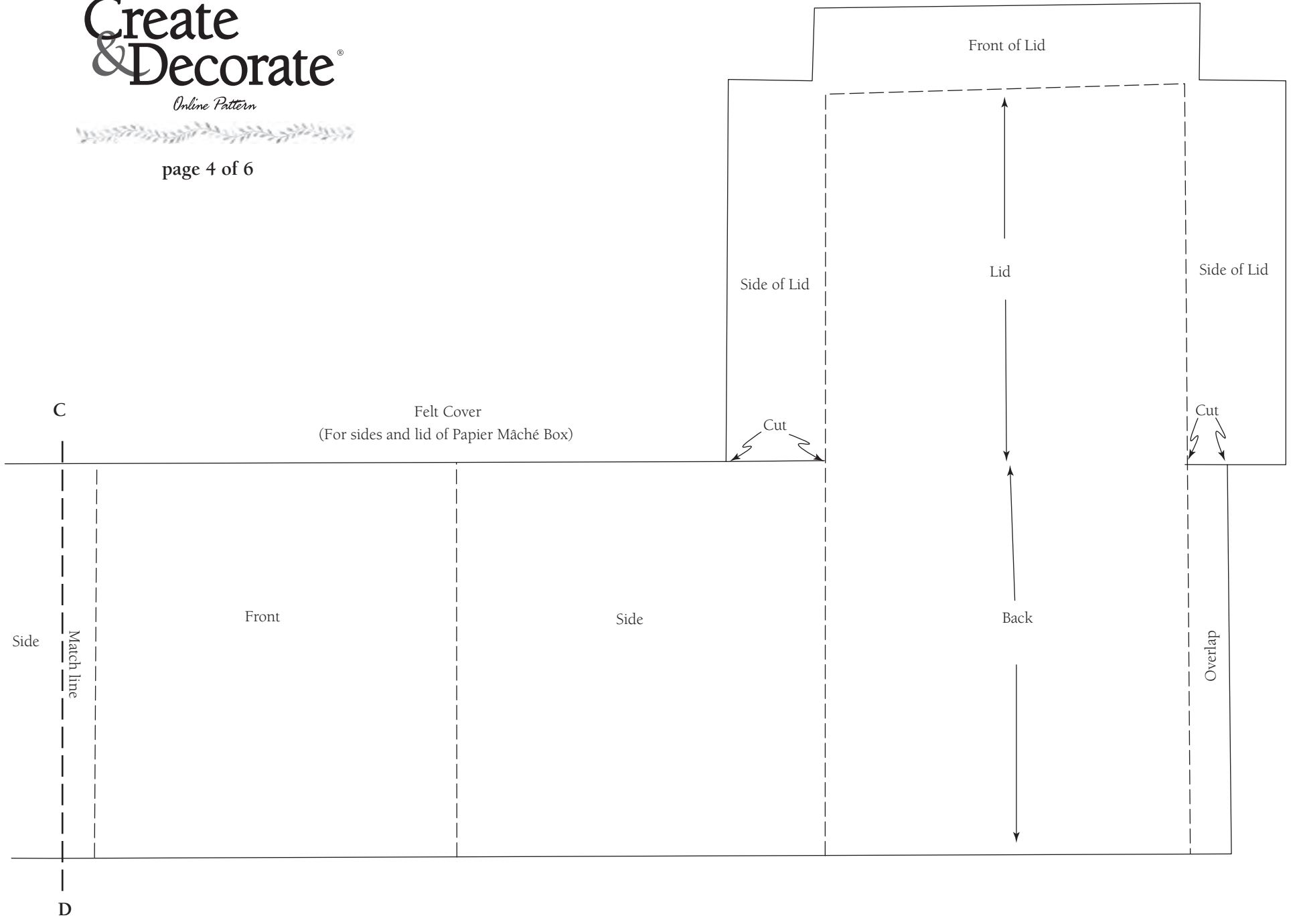


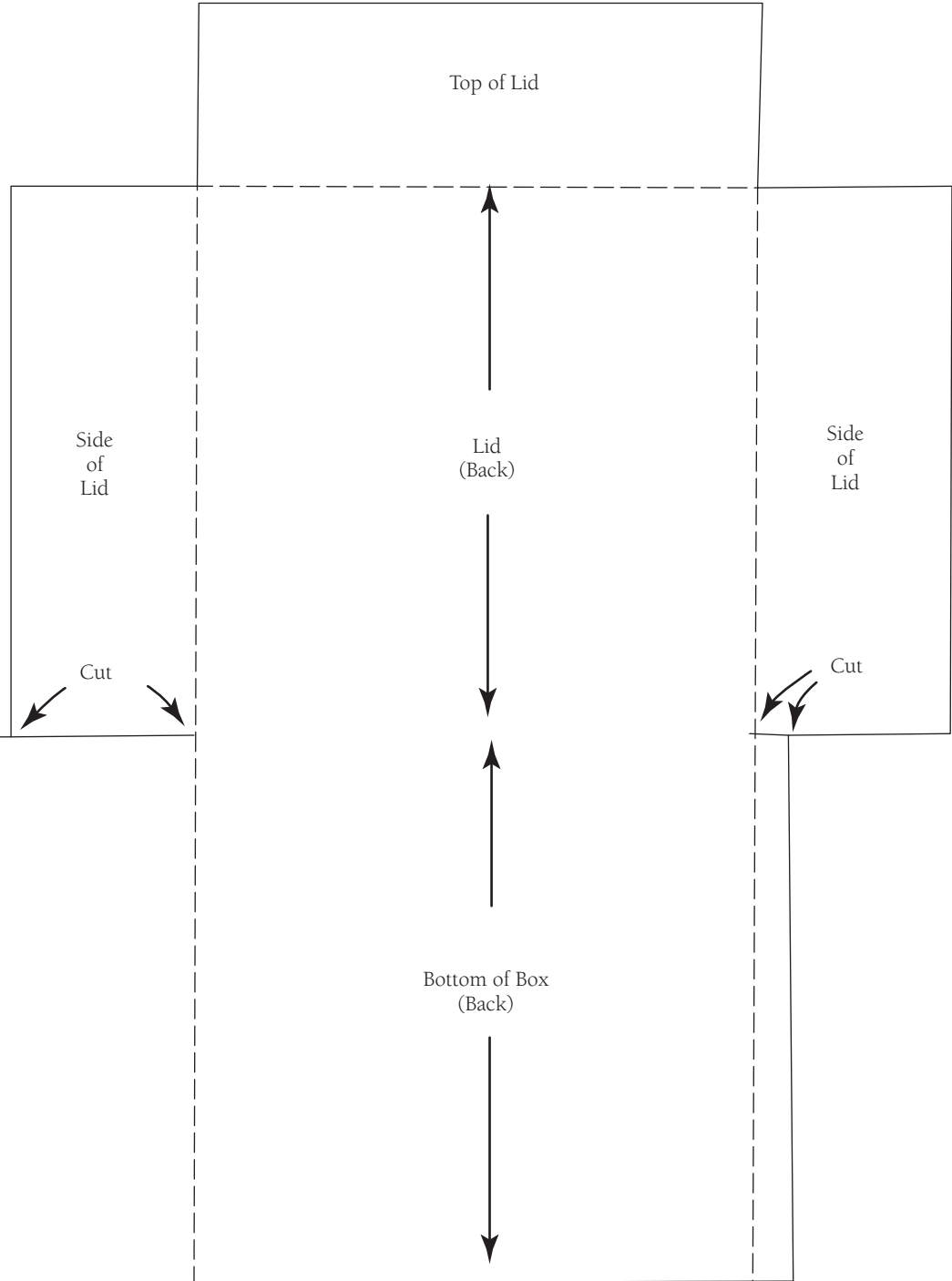
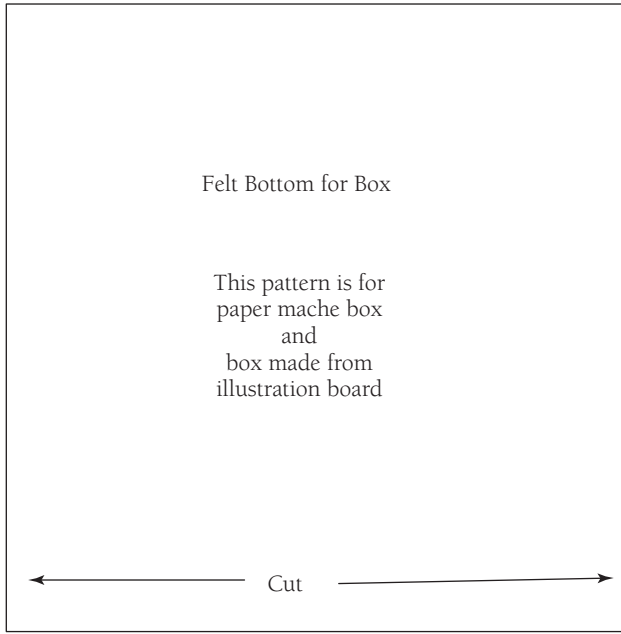
# Create & Decorate®

Online Pattern



page 4 of 6





E

Felt to Cover Sides & Lid of Box made from illustration board

Match line

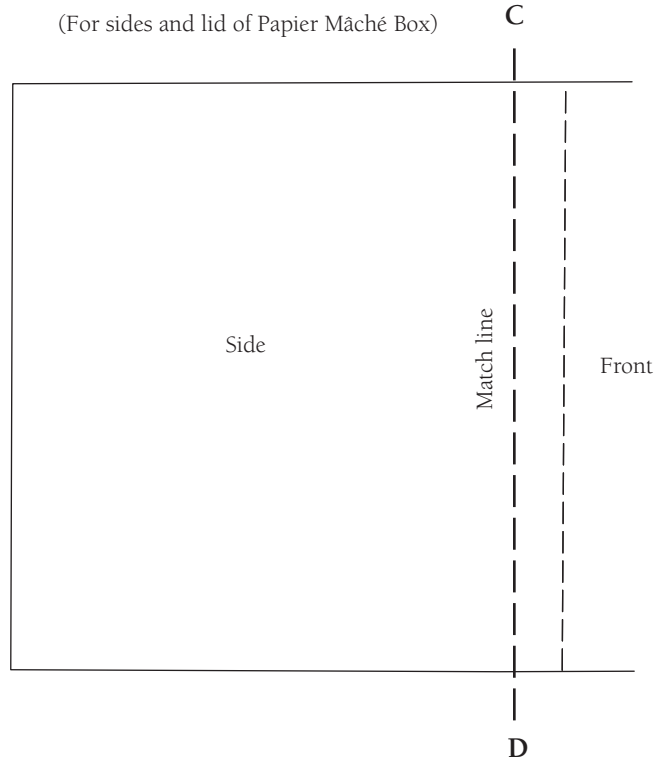
Front

Side

F

Since box size may vary use felt liner pattern as a guide.

Felt Cover  
(For sides and lid of Papier Mâché Box)



Felt to Cover Sides & Lid of Box  
made from illustration board

